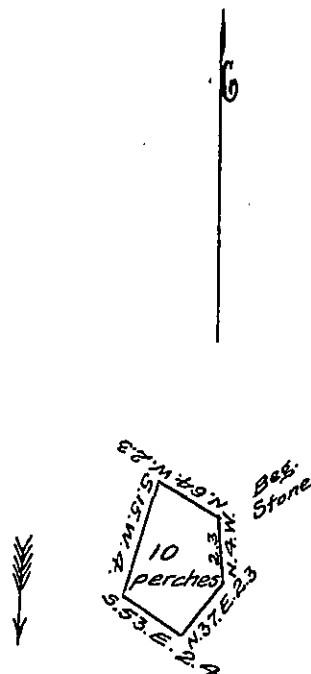


York County



Jeremiah Brown  
Lancaster County

Draught of "Round Island" situate in Little Britain Town-  
 ship in the County of Lancaster, in the River Susquehanna, near  
 "Double Island" and opposite land of Jeremiah Brown on the Lancas-  
 ter County side, containing ten perches, neat measure; Surveyed for  
 John Kirk, in pursuance of a Warrant, bearing date the 30th Day  
 of March, Anno Domini 1821.

Examined, and Certified the

23<sup>rd</sup> Day of March 1822.

To Sam<sup>l</sup> Cochran, Esqr. }  
 Surveyor Gen<sup>l</sup> }

Robert King J<sup>r</sup> D.S.

IN TESTIMONY that the above is a copy of the original remaining on file in  
 the Department of Internal Affairs of Pennsylvania, made  
 conformably to an Act of Assembly approved the 16th day of  
 February, 1833, I have hereunto set my Hand and caused  
 the Seal of said Department to be affixed at Harrisburg,  
 this thirty first day of January 1908.

*Henry Houch*  
 Secretary of Internal Affairs.